



InventoryControl Web Quick Start Guide

Congratulations on your purchase of InventoryControl Web! This web-based tool allows you to track your inventory

To print this Quick Start Guide, right click anywhere on this page, then choose **Print**. If the right margin is cut off on the printed copy, try setting your page margins.

You should install the InventoryControl software before you install InventoryControl Web.

This Quick Start Guide covers the following topics:

[Minimum Web Server/Operating Systems/Internet Browser Requirements](#)
[Installation Instructions](#)
[Accessing InventoryControl Web](#)

Minimum Web Server/Operating Systems/Internet Browser Requirements:

- **Operating Systems:** Windows Server 2003 (recommended), Windows Server 2008 (recommended), Windows Vista, Windows XP SP2, Windows 7
- **Processor:** 1 GHz Pentium processor or equivalent
- **RAM:** 512 MB minimum
- **Hard Disk:** 5.5 MB required for InventoryControl Web (up to 600 MB required for IIS and Microsoft .NET Runtime)
- **Display:** Web pages are configured for 1024X768 screen resolution 32bit color minimum
- **Install Requirements:** IIS 5.1 or later
- **Web Pages Viewable With:** Internet Explorer 6, Firefox, Chrome, Safari, Opera

Notes:

Different web browsers and IIS versions may display web pages differently.

The web server is the piece of code that must be running at all times. In addition, the web server must be available across your intranet or across the internet in order for your employees to be able to view the InventoryControl Web pages using an Internet browser.

If you need help installing IIS on a machine, please refer to the Microsoft website.

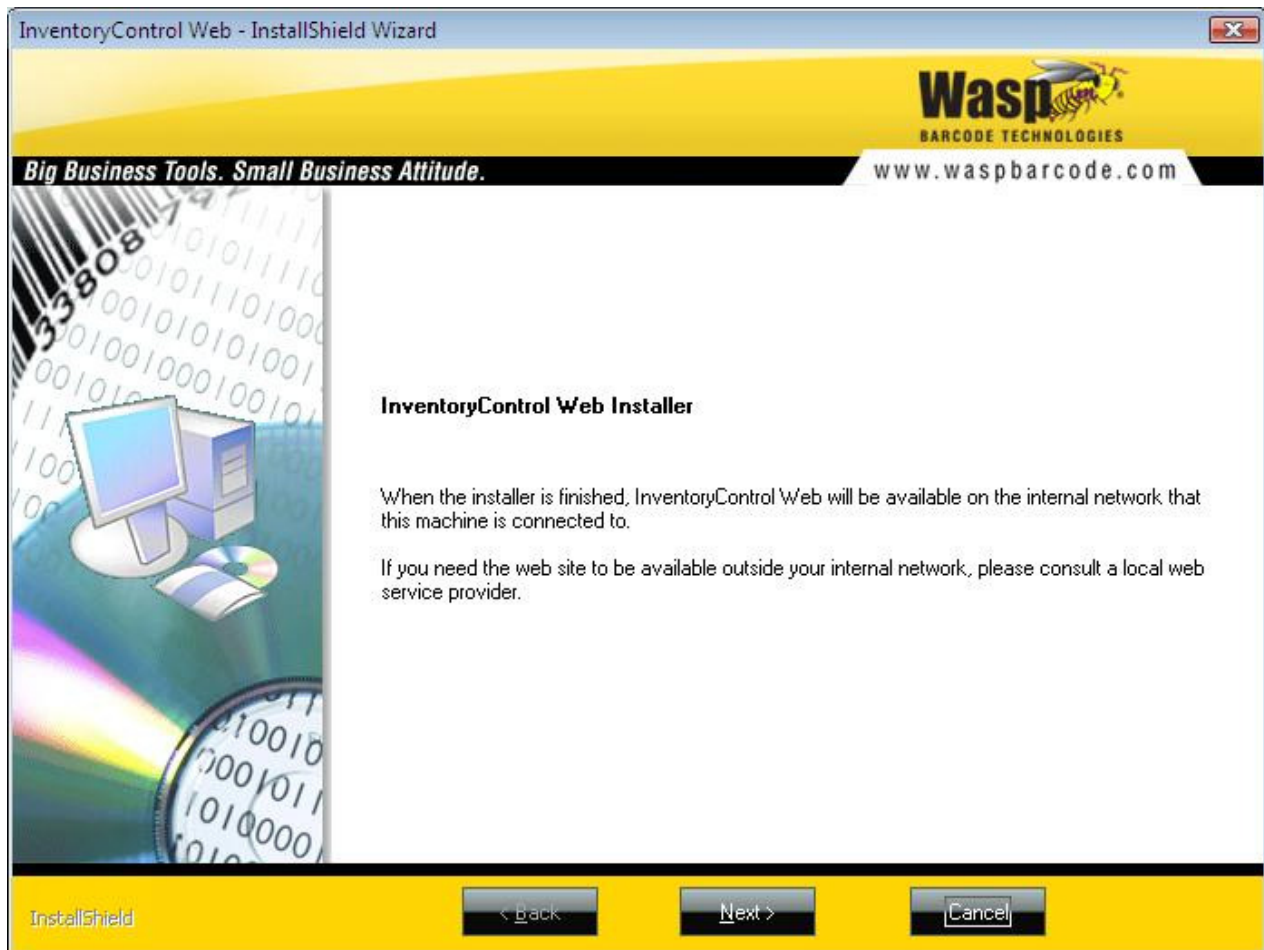
Keep in mind that you can install the Web application on any machine in your network running IIS 5.1 or better.

Installation Instructions:

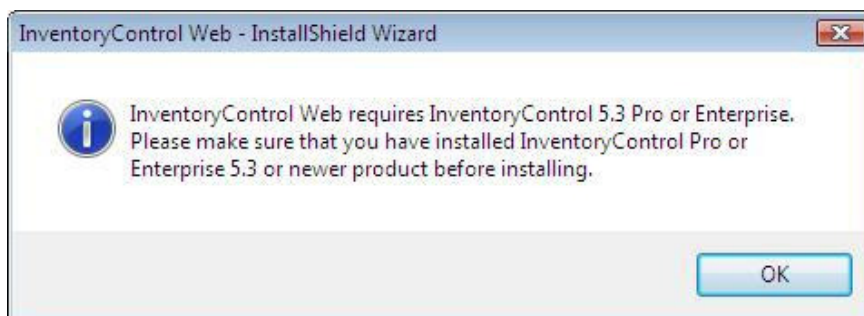
1. InventoryControl Web is shipped on a separate CD from the InventoryControl application. It cannot be

used without access to the full InventoryControl PC database, but it may be installed on a different PC, if needed. You should install it on a dedicated web server that is always turned on. You must install the InventoryControl PC application before you install the Web application.

Insert the installation CD into the CD ROM drive. If the Welcome screen does not automatically appear, on your installation CD, double-click on **Setup.exe**. The following **Welcome** screen will appear:



2. Click the **Next** button to proceed. The following message will appear:



Click **OK** to Proceed. You may also receive a warning message if you do not have IIS installed on your machine. IIS must be running on the machine where you install InventoryControl web.

3. Next a screen appears asking for the serial number. Enter the number, then click **Next**.

Please enter your name, the name of the company for which you work and the product serial number.

User Name:
Jane Doe

Company Name:
Doe Fabrics

Serial Number:
|

4. The **License Agreement** screen appears next.

Wasp Bar Code Technologies

SOFTWARE LICENSE AGREEMENT

READ THE TERMS AND CONDITIONS OF THIS LICENSE AGREEMENT CAREFULLY BEFORE INSTALLING THE SOFTWARE OR USING THE ASSOCIATED MEDIA, PRINTED MATERIALS, AND "ON-LINE" OR ELECTRONIC DOCUMENTATION (COLLECTIVELY, "USER DOCUMENTATION"). THE SOFTWARE AND USER DOCUMENTATION (COLLECTIVELY, THE "SOFTWARE PRODUCT") IS COPYRIGHTED AND LICENSED (NOT SOLD). BY INSTALLING THE SOFTWARE PRODUCT, YOU ARE ACCEPTING AND AGREEING TO THE TERMS OF THIS LICENSE AGREEMENT. IF YOU ARE NOT WILLING TO BE BOUND BY THE TERMS OF THIS LICENSE AGREEMENT, YOU SHOULD PROMPTLY RETURN THE SOFTWARE PRODUCT TO THE PLACE OF PURCHASE WITHIN THIRTY (30) DAYS OF PURCHASE OF THE SOFTWARE PRODUCT AND YOU WILL RECEIVE A REFUND OF YOUR MONEY. THIS LICENSE AGREEMENT REPRESENTS THE ENTIRE AGREEMENT CONCERNING THE SOFTWARE PRODUCT BETWEEN YOU AND WASP BAR CODE TECHNOLOGIES (REFERRED TO AS "LICENSOR"), AND IT SUPERSEDES ANY PRIOR PROPOSAL, REPRESENTATION, OR UNDERSTANDING BETWEEN THE PARTIES.

1. License Grant. Licensor hereby grants to you, and you accept, a nonexclusive license to

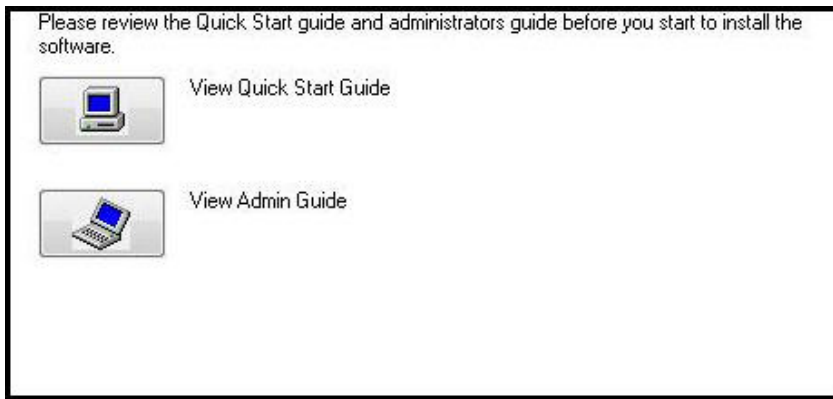
☒ I accept the terms of the license agreement

☐ I do not accept the terms of the license agreement

Print

Review the End User License Agreement, select the **I accept the terms of the license agreement** radio button, then click the **Next** button. You will not be able to proceed with the installation until you select the I Accept... radio button.

5. The **Documentation** screen appears next. Click on the links provided on the screen to access this Quick Start Guide and the Administrators Guide. The Web Troubleshooting Guide provides troubleshooting for various web installation problems.



Click **Next** to proceed.

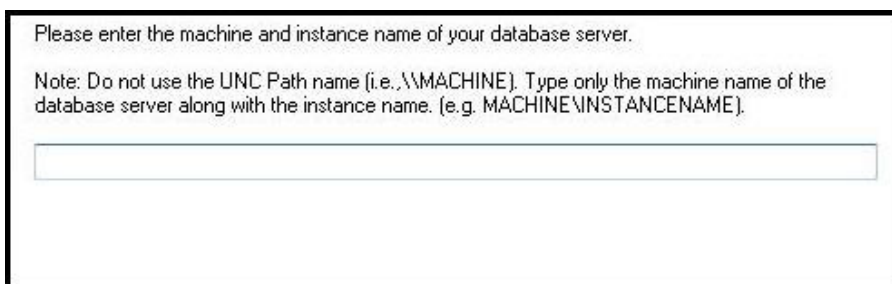
6. The first **Install** screen appears.



The default installation folder is listed. You can change this folder by click the **Change** button and navigating to a new folder. Click **Next** to begin the installation.

This portion of the installation may take up to 30 minutes. You may see a series of progress screens during this time. Do not stop the installation at this point.

7. The **Database Location** screen appears next.



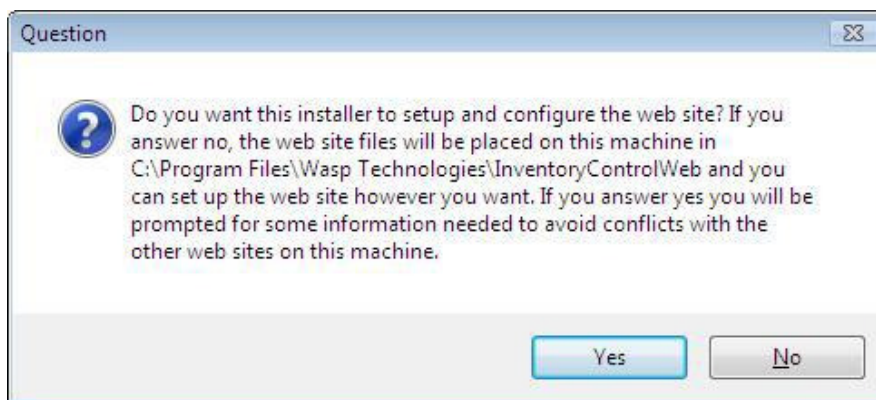
Enter the name of the machine on which the database is installed.

8. The following question message appears at this point:



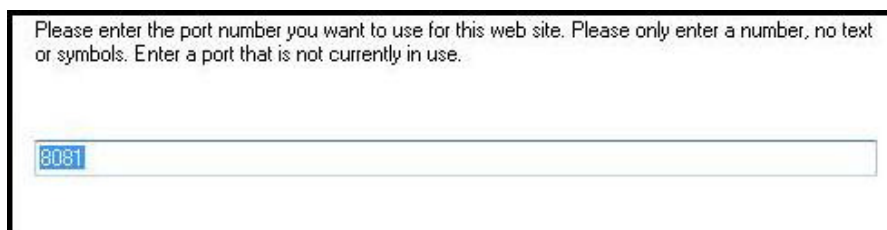
If InventoryControl Web will be the only web site on this web server, click **Yes**. The installation will continue using default settings. Continue to Step 9.

If this will not be the only web site on this server, click **No**. If you click **No**, the following screen will appear:



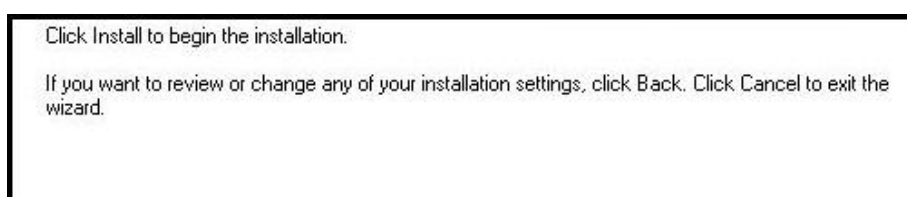
If you do not want the installer to setup and configure the web site for you, click **No**. A message will appear stating that the web site files will be placed in the C:\Program Files\Wasp Technologies\InventoryControl Web folder. You can access these files and setup the web site as needed.

If you do want the installer to setup and configure the InventoryControl Web website for you, click **Yes**. The following screen will appear:

A rectangular box containing the text: "Please enter the port number you want to use for this web site. Please only enter a number, no text or symbols. Enter a port that is not currently in use." Below the text is a text input field with the number "8081" entered and highlighted.

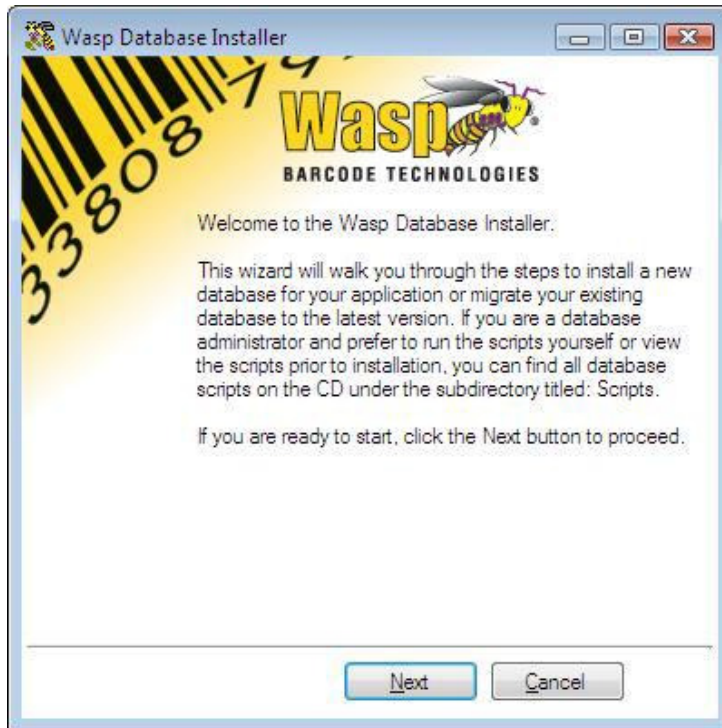
8081 is the default port used for installation. If you enter a different port, make sure it is not currently in use. Click **Next** to continue. You may continue to Step 7.

9. An Installation screen appears.

A rectangular box containing the text: "Click Install to begin the installation." and "If you want to review or change any of your installation settings, click Back. Click Cancel to exit the wizard."

Click **Install** to finalize the installation. You may see a series of progress screens.

10. Next, the Wasp Database Installer will appear:



Click **Next** to continue.

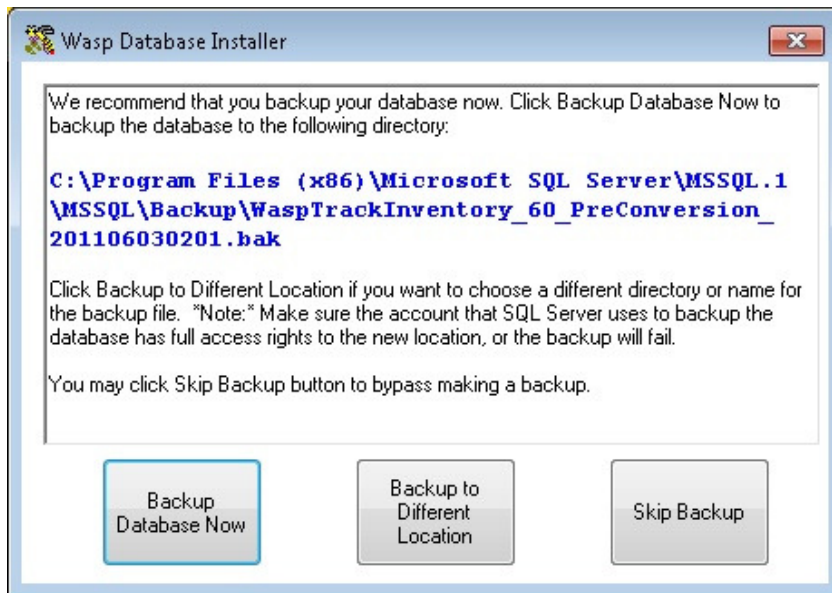
11. The **Password** screen appears:



The **Server** name should appear automatically based on the database machine name you previously entered. Enter your **Login ID** and **Password**, then click **OK**.

If you are an Admin on the machine where the database is located, you can select **Integrated Security** rather than entering a password.

12. You will see a progress message as the installer locates the database. A Backup screen appears after the database is connected:



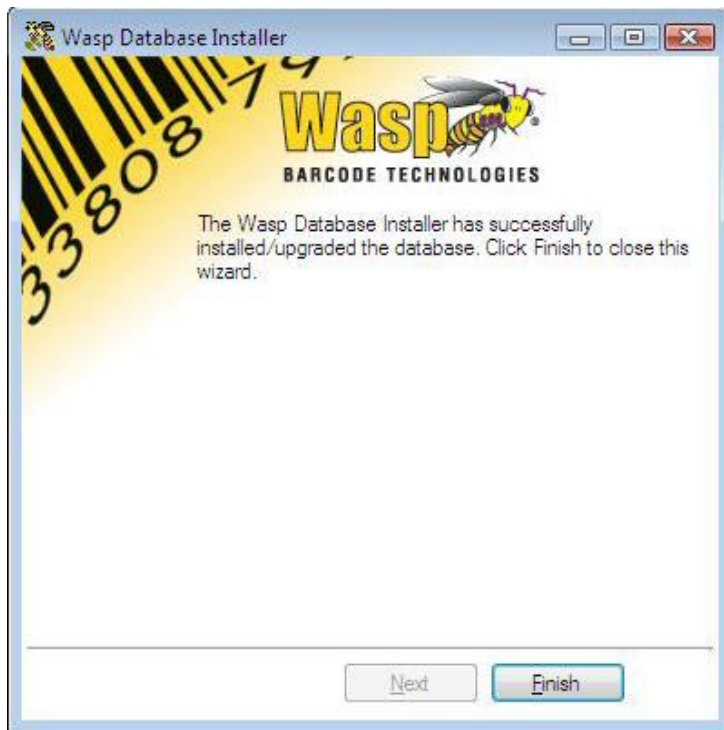
Your options are:

Backup Database Now - Choose this option to backup the database to the directory shown on the screen.

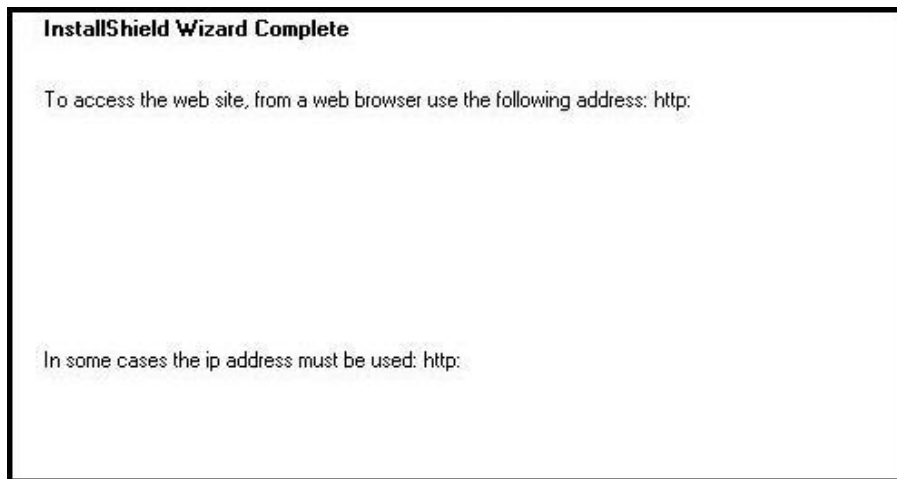
Backup to Different Location - Choose this option to backup the database to a location of your choosing.

Skip Backup - Choose this option to backup the database at a later time.

13. You will see another series of progress messages after you backup the database, followed by the installation confirmation screen:



14. Lastly, the **InstallShield Wizard Complete** screen will appear.



Make a note of the listed IP address, then click the **Finish** button.

Accessing InventoryControl Web:

After installation, you can access InventoryControlWeb from your Internet Browser window from the following address:

http://<machine name:port number>/

You should turn off your firewall before trying to access the Web application.

Any user setup with a login and password in InventoryControl will be able to log on to the Web application.

Please review the InventoryControl Web Online Help for information on using the application.
